

Efficient Immobilization of a Cadmium Chemosensor in a Thin Film: Generation of a Cadmium Sensor Prototype

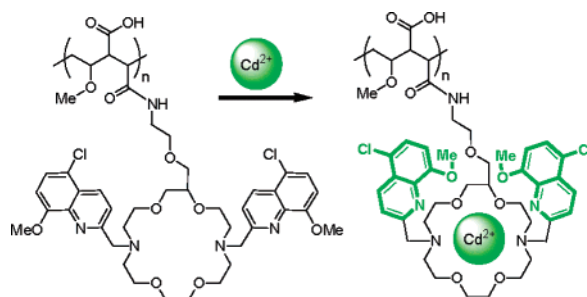
R. Todd Bronson,^{*,†} David J. Michaelis, Randy D. Lamb, Ghaleb A. Hussein, Paul B. Farnsworth, Matthew R. Linford, Reed M. Izatt, Jerald S. Bradshaw, and Paul B. Savage

Physical Science Department, College of Southern Idaho, Twin Falls, Idaho 83301, and Department of Chemistry and Biochemistry, Brigham Young University, Provo, Utah 84602

tbronson@csi.edu

Received January 6, 2005

ABSTRACT



The development of an ion-selective chemosensor for Cd^{2+} allows generation of a “real-time” sensor. Immobilization of the chemosensor on quartz was achieved in a simple monolayer and in a thin film using a polymer intermediary. As intended, the thin film contains much more chemosensor than the monolayer and provides measurable responses to aqueous Cd^{2+} concentrations below $1\ \mu\text{M}$. Alkali and alkaline earth ions do not interfere with Cd^{2+} sensing; Zn^{2+} and Cu^{2+} are potential interferents.

The detrimental effects of cadmium on human health are increasingly being recognized; chronic cadmium exposure can cause renal dysfunction, calcium metabolism disorders, and an increased incidence of certain forms of cancer,¹ possibly due to direct inhibition of DNA mismatch repair by cadmium.² Anthropogenic sources of cadmium in the environment include mining and smelting metal ores, fossil fuel combustion, and metal industries.³ In addition, cadmium

is often found in high concentrations in phosphate mined for use as fertilizer⁴ and can be concentrated in sewage sludge.³ Identification of cadmium-contaminated sewage and fertilizer would prove to be very useful in limiting human exposure, as would identification of other environmental sources of cadmium.

Most current methods of quantifying cadmium are labor intensive and expensive,^{2,5} and an attractive means of

[†] College of Southern Idaho.

(1) *Cadmium in the Human Environment: Toxicity and Carcinogenicity*; Nordberg, G. F., Herber, R. F. M., Alessio, L., Eds.; Oxford University Press: Oxford, 1992.

(2) McMurray, C. T.; Tainer, J. A. *Nat. Genet.* **2003**, *34*, 239–241.

(3) Alloway, B. J.; Steinnes, E. In *Cadmium in Soils and Plant*; McLaughlin, M. J., Singh, B. R., Eds.; Kluwer Academic Publishers: Boston, 1999; pp 97–118.

(4) Satarug, S.; Baker, J. R.; Urbenjapol, S.; Haswell-Elkins, M.; Reilly, P. E. B.; Williams, D. J.; Moore, M. R. *Toxicol. Lett.* **2003**, *137*, 65–83.

(5) For examples, see: (a) EPA methods 600/4-79-020, 600/4-91-010, 600/R-97-072, and 600/R-94-111 (abstracts for these methods can be found on the Internet at www.epa.gov). (b) Garrido, M. L.; Muñoz-Olivas, R.; Cámara, C. *J. Atomic Spec.* **1998**, *13*, 1145–1149. (c) Zougagh, M.; García de Torres, A.; Cano Pavón, J. M. *Talanta* **2002**, *56*, 753–761.

improving monitoring of metal ion concentrations would be the use of simple, inexpensive, and portable sensors. This need has been recognized, and a number of potential means of measuring specific metal ion concentrations using on-site, inexpensive facilities have been investigated.⁶ These methods have employed ion-selective electrodes or colorimetric measurements; however, they suffer from high detection limits or the need for preconcentration procedures.

Extensive efforts have been made to prepare and characterize chemosensors for specific metal ions with the intent of incorporating these molecules in sensors.⁷ For example, He et al.,⁸ recently reported the use of a fluorescent, ion-selective chemosensor in a sensor capable of measuring potassium concentrations in the millimolar range in whole blood. Reinhoudt and co-workers⁹ immobilized a sodium-selective chemosensor in a monolayer on quartz and observed small changes in fluorescence in the presence of sodium acetate.

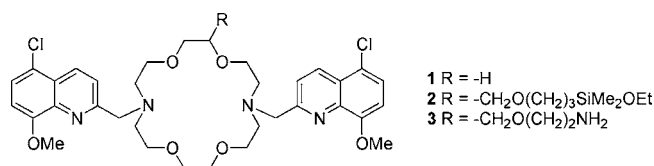


Figure 1. Structure of chemosensor **1** and appended forms **2** and **3**.

We recently reported the synthesis and characterization of **1** (Figure 1) as a selective chemosensor for cadmium.¹⁰ This compound selectively binds and responds to Cd²⁺ via a large change in fluorescence emission (log K_a = 6.1, Φ = 0.66). The observed fluorescence enhancement upon complexation is believed to result from an efficient interruption of photoinduced electron transfer (PET) between the amino groups and the chromophore ring systems by Cd²⁺. We now report immobilization of this chemosensor on quartz in a monolayer and in a thin film, as well as characterization of the resulting materials for use in a cadmium sensor.

For preparation of a monolayer of **1**, we appended ethoxydimethylsilane onto the chemosensor, starting with known **4**¹¹ to give **2** (Scheme 1). This allowed monolayer

(6) (a) Ito, S.; Asano, Y.; Wada, H. *Talanta* **1997**, *44*, 697–704. (b) Gupta, V. K.; Kumar, P. *Anal. Chim. Acta* **1999**, *389*, 205–212. (c) Couto, C. M. C. M.; Lima, J. L. F. C.; Concicão, M.; Montenegro, B. S. M.; Reis, B. F.; Zagatto, E. A. G. *Anal. Chim. Acta* **1998**, *366*, 155–161. (d) Suteerapataranon, S.; Jakumnee, J.; Vaneesorn, Y.; Grudpan, K. *Talanta* **2002**, *58*, 1235–1242.

(7) For recent reviews, see: (a) Valeur, B.; Leray, I. *Coord. Chem. Rev.* **2000**, 205, 3–40. (b) Prodi, L.; Bolletta, F.; Montalti, M.; Zaccheroni, N. *Coord. Chem. Rev.* **2000**, 205, 59–83.

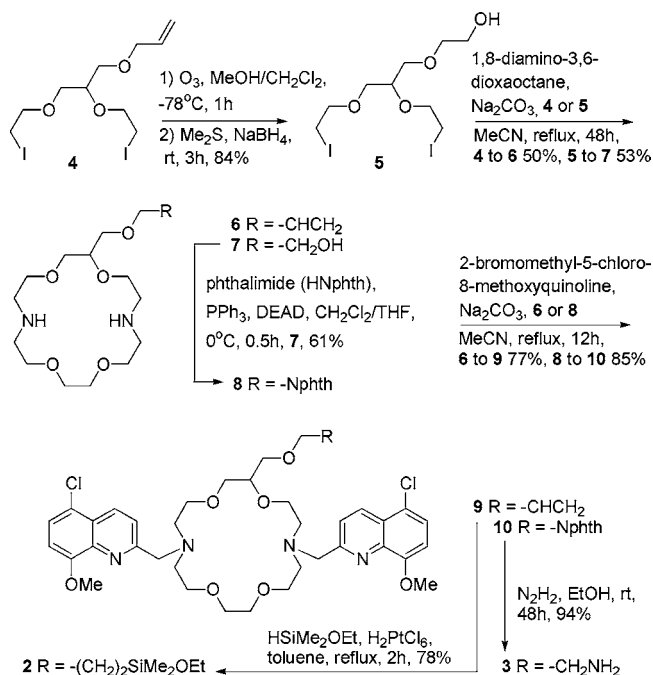
(8) He, H.; Mortellaro, M. A.; Leiner, M. J. P.; Fraatz, R. J.; Tusa, J. K. *J. Am. Chem. Soc.* **2003**, *125*, 1468–1469.

(9) van der Veen, N. J.; Flink, S.; Deij, M. A.; Egberink, R. J. M.; van Veggel, F. C. J. M.; Reinhoudt, D. N. *J. Am. Chem. Soc.* **2000**, *122*, 6112–6113.

(10) Prodi, L.; Montalti, M.; Zaccheroni, N.; Bradshaw, J. S.; Izatt, R. M.; Savage, P. B. *Tetrahedron Lett.* **2001**, 42, 2941.

(11) Bradshaw, J. S.; Krokowiak, K. E.; Bruening, R. L.; Tarbet, B. J.; Savage, P. B.; Izatt, R. M. *J. Org. Chem.* **1988**, 53, 3190.

Scheme 1. Synthesis of Appended Chemosensors **2** and **3**



formation without the complication of possible polymerization.¹² To increase the number of reactive groups on the surface, we also immobilized the chemosensor through an intermediary polymer using amine-appended chemosensor **3**. Treatment of quartz slides with 3-aminopropyltriethoxysilane (neat) at elevated temperature provided an amine-functionalized surface, which was in turn reacted with poly-(methylvinyl ether-*alt*-maleic anhydride) (average MW = ca. 1 250 000) in an aggregated form in THF and CH₂Cl₂. The intent was to leave anhydride groups in the polymer free for later reaction with **3**.

Characteristic UV absorptions of **2** and **3** were used to gauge the amount of chemosensor immobilized in the monolayer and thin film. Slides derived from **2** and **3** gave absorbances of approximately 0.01 and 0.16 AU at 250 nm, respectively, indicating that the intermediary polymer markedly increased the number of reactive sites available for immobilization. Repeated experiments and UV characterization demonstrated that the immobilization procedures were reproducible. X-ray photoelectron spectroscopy confirmed the presence of nitrogen and chlorine in the thin film, and the N/Si ratio provided an estimate of film thickness of 100 Å.

The following were key issues in studying the behaviors of the monolayer and thin film: increases in fluorescence concomitant with exposure to Cd^{2+} , apparent kinetics of complex formation and dissolution, and effects of potential interferents. To study these issues, we used a flow-through cell through which we could pass solutions while observing fluorescence at the characteristic emission wavelength of the 1-Cd^{2+} complex. In the cell, slides were held at 40° with

(12) Angst, D. L.; Simmons, G. W. *Langmuir* **1991**, 7, 2236–2242.

respect to the excitation source, and flow rates were 3 mL/min with a cell volume of approximately 1.6 mL. To ensure that pH changes did not interfere with measurements, solutions were buffered with sodium acetate (10 mM, pH 5.1).

When subjected to solutions of Cd^{2+} , the monolayer containing **2** yielded only modest increases in intensity over background fluorescence (<400 CPS change in the presence of 10 μM Cd^{2+}). Nevertheless, these small changes correlated roughly with Cd^{2+} concentration, and responses were relatively rapid. However, the small increase in fluorescence intensity suggested that greater quantities of immobilized chemosensor might be better suited for use in a sensor.

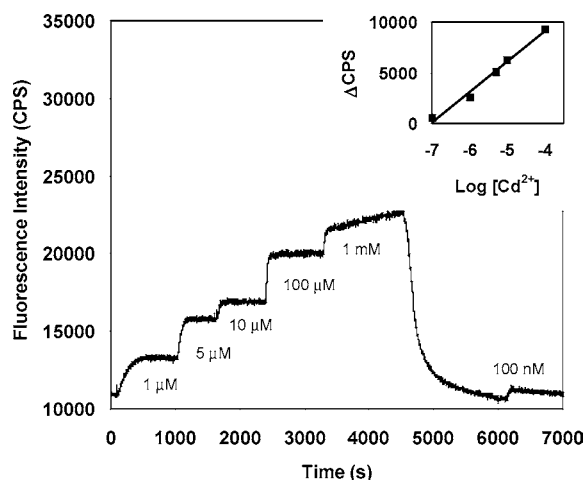


Figure 2. Response of thin film containing **3** to Cd^{2+} in aqueous sodium acetate buffer (10 mM, pH 5.1). $\lambda_{\text{ex}} = 335$ nm; $\lambda_{\text{em}} = 450$ nm; slit widths (ex and em) = 2 nm.

The thin film containing **3** gave a large fluorescence increase in the presence of Cd^{2+} (Figure 2). Response times to the presence of Cd^{2+} were about 1 min, while approximately 5 min was required for the fluorescence to return to baseline (these response times include time required to equilibrate the solution in the cell). The thickness of the monolayer and the dissociation rate of Cd^{2+} likely contribute to the rate of response. With the thin film, it was possible to detect readily the presence of Cd^{2+} at 1 μM , and a small response was observed at 100 nM Cd^{2+} . At the highest concentration (1 mM), a slow increase in fluorescence intensity was observed. This increase may be caused by formation of a higher-order complex with greater quantum yield. A plot of fluorescence response vs $[\text{Cd}^{2+}]$ indicated that this relationship is logarithmic in nature (inset, Figure 2) over the concentration range studied (100 nM to 1 mM Cd^{2+}), which may be due to energy transfer among fluorophores leading to nonradiative decay and loss of affinity of the thin film for the target cation as the ionic nature of the thin film increases.

To observe reversibility of binding and dissociation, the thin film was alternatively exposed to a solution of Cd^{2+}

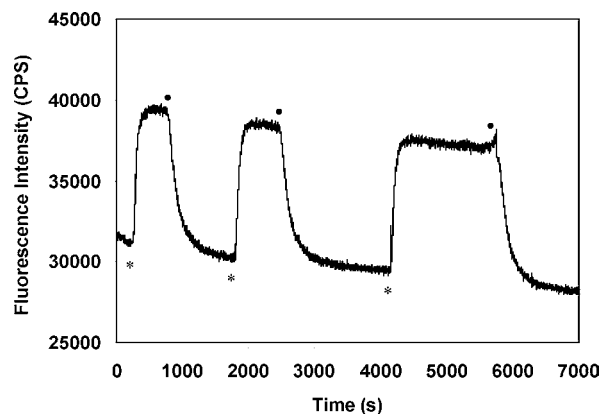


Figure 3. Fluorescent response of thin film containing **3** to Cd^{2+} (10 μM) in aqueous sodium acetate buffer (10 mM, pH 5.1). $\lambda_{\text{ex}} = 335$ nm; $\lambda_{\text{em}} = 450$ nm; slit widths (ex and em) = 2 nm. (*) Flow of Cd^{2+} solution initiated. (•) Flow of Cd^{2+} -free buffer initiated.

and sodium acetate buffer (Figure 3). In these experiments, we observed a gradual loss of fluorescence intensity at both the baseline and with the thin film exposed to Cd^{2+} . This loss of fluorescence proved to be due to photobleaching of the fluorophore, which remained constant with loss of approximately 0.27% of the fluorescent signal per minute of exposure to the excitation radiation. It is anticipated that it would be possible to compensate for this loss in signal in a functional sensor.

Studies then focused on correlation of the behavior of **1** to that of **3** in the thin film with three classes of metal ions of interest: those expected to be present in nearly every matrix at high concentration (e.g., alkali metal and alkaline earth ions), other metal ions that form fluorescent complexes with **1**, and those that associate with **1** but quench fluorescence. A survey of the responses to Na^+ and K^+ indicated that the thin film does not respond to these ions even at high concentrations. Ca^{2+} forms a complex with **1** with a relatively high quantum yield ($\log K_a = 3.3$, $\Phi = 0.58$);¹⁰ however, the thin film containing **3** does not respond appreciably to this ion even at relatively high concentrations (100 μM). Zn^{2+} also associates with **1** ($\log K_a = 4.0$, $\Phi = 0.48$),¹⁰ and we found that this ion generates a fluorescent response that is approximately half of that observed with the same concentration of Cd^{2+} (Figure 4A). This difference may be due to the lower quantum yield of the Zn^{2+} complex and the lower affinity of the chemosensor for this ion, as compared to Cd^{2+} . Cu^{2+} forms a stable complex with **1** but quenches fluorescence ($\log K_a = 5.8$). Not only did exposure of the thin film containing **3** to Cu^{2+} result in no increase in fluorescence, but formation of the **3**– Cu^{2+} complex also caused quenching of background fluorescence (Figure 4B). Exposure of the thin film to mixtures of Cd^{2+} and Cu^{2+} gave the signature quenching of the latter ion. This result suggests that either **3** in the thin film has a higher affinity for Cu^{2+} than for Cd^{2+} or that Cu^{2+} is capable of quenching the fluorescence of **3**– Cd^{2+} complexes.

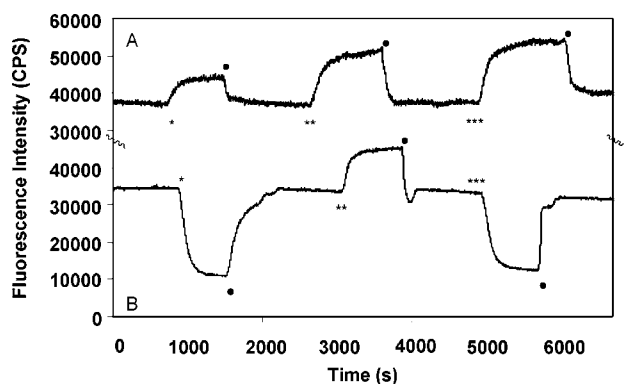


Figure 4. (A) (*) Flow of Zn^{2+} solution ($10\ \mu\text{M}$) initiated. (**) Flow of Cd^{2+} solution ($10\ \mu\text{M}$) initiated. (***) Flow of Zn^{2+} ($10\ \mu\text{M}$) and Cd^{2+} ($10\ \mu\text{M}$) solution initiated. (•) Flow of buffer initiated. (B) (*) Flow of Cu^{2+} solution ($10\ \mu\text{M}$) initiated. (**) Flow of Cd^{2+} solution ($10\ \mu\text{M}$) initiated. (***) Flow of Cu^{2+} ($10\ \mu\text{M}$) and Cd^{2+} ($10\ \mu\text{M}$) solution initiated. (•) Flow of buffer initiated.

We have demonstrated that incorporation of an ion-selective chemosensor into a thin film yields materials that can selectively respond to their target metal ion. Use of a polymer intermediary allows immobilization of relatively large quantities of chemosensor in a film sufficiently thin to

allow ion diffusion and equilibration in minutes, and the response of the thin film to the target metal ion can be correlated to ion concentration. Consequently, Cd^{2+} concentrations can be effectively and continuously measured in “real time” in simple solutions. Alkali metal and alkaline earth ions do not interfere with quantification of Cd^{2+} ; interferents include Zn^{2+} and Cu^{2+} . Use of additional chemosensors, selective for these interfering metal ions, in arrays is expected to provide a means of quantifying Cd^{2+} in more complex matrixes. Detection limits of the sensor prototype for Cd^{2+} are well below those reported by He⁸ for K^{+} , and because the fluorescent lifetime of the **1**– Cd^{2+} complex is much longer than that of the free ligand,¹⁰ we anticipate that detection limits can be lowered by orders of magnitude using time-resolved spectroscopy.

Acknowledgment. Financial support from Brigham Young University is gratefully acknowledged.

Supporting Information Available: Experimental procedures for preparation of **2** and **3** and methods used in making monolayers and thin films. This material is available free of charge via the Internet at <http://pubs.acs.org>.

OL050027T